

Product profile

SmartWedge™

Intermec SmartWedge



- Streamlines data collection via intuitive wedge communication
- Actively maintains wireless connection to Intermec scanners
- Configures scanners using Intermec Settings via PC
- Supports data editing and filtering
- Supports 7:1 communication (7 scanners, 1 PC)
- No bulky base station and/or cables required
- For use with PC operating system Windows® XP w/ SP2

Intermec SmartWedge is a software wedge tool that directs scanned data to the application being used. This software wedge is designed for use with the SF51 and SR61 Bluetooth™ enabled to scanners. It is only necessary when connecting scanners to a personal computer. Intermec SmartWedge manages the user interface to simulate the same performance and ease of use that users expect when connecting to an Intermec handheld or vehicle mount terminal.

Intermec SmartWedge manages the Bluetooth interface to actively maintain connectivity between PC and scanner, and reinstates it when lost. If the user walks out of radio range, or loses the radio signal behind a stack of boxes, traditional Bluetooth devices require the user to manually reconnect the device to the host. Intermec SmartWedge automates the reconnection – no user involvement is required.

SmartWedge software enables users to manage scanner configuration settings directly from the host PC and change them quickly and easily. Options include support for multiple symbologies and settings for a range of user preferences, including preambles, postambles, triggers and beeps.

The software helps maximize productivity by enabling connections for up to seven Bluetooth enabled scanners to one host personal computer without the use of additional base station hardware and/or cables. While traditional local area network scanning infrastructures require a base station to manage the connections and wedge data to the application in use, Intermec SmartWedge wraps these functions into one software package that resides on the PC. By eliminating unnecessary hardware and cables the user environment is safer and there are no costly cables to replace.

Physical Description

Intermec SmartWedge is a software tool that directs scanned data to application in use.

Minimum Hardware Requirements

Memory: 64MB (for SP2) + 50MB = 114MB

Processor: 233 MHz

Hard drive: 20 MB free disk space to install the SmartWedge

Bluetooth radio: Intermec USB Bluetooth adapter

Recommended Intermec Scanners

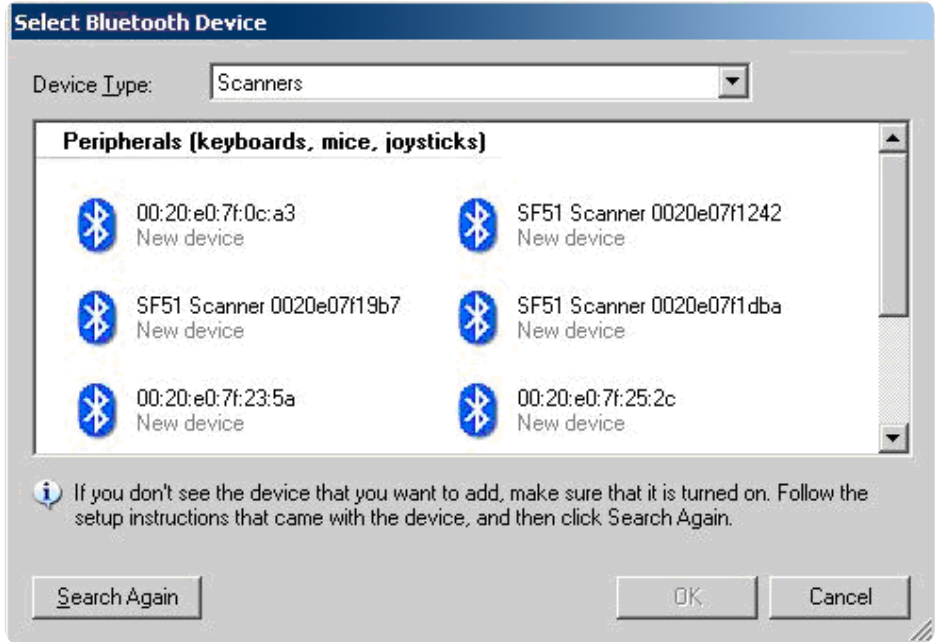
For use with Intermec Bluetooth enabled scanners – SF51 or SR61

Operating System

Windows XP with service pack 2

Product Registration

Intermec SmartWedge is not a shared product. Purchase and registration is required. Please visit www.intermec.com/IntermecSmartWedge to register your copy.



SmartWedge identifies scanners in the area, makes it easy to connect, and reconnects automatically when needed.

North America

Corporate Headquarters

6001 36th Avenue West
Everett, Washington 98203
Phone: (425) 348-2600
Fax: (425) 355-9551

South America & Mexico

Headquarters Office

Newport Beach, California
Phone: (949) 955-0785
Fax: (949) 756-8782

Europe/Middle East &

Africa Headquarters Office

Reading, United Kingdom
Phone: +44 118 923 0800
Fax: +44 118 923 0801

Asia Pacific

Headquarters Office

Singapore
Phone: +65 6303 2100
Fax: +65 6303 2199

Internet

www.intermec.com
Worldwide Locations:
www.intermec.com/locations

Sales

Toll Free NA: (800) 934-3163
Toll in NA: (425) 348-2726
Freephone ROW: 00 800 4488 8844
Toll ROW: +44 134 435 0296

OEM Sales

Phone: (425) 348-2762

Media Sales

Phone: (513) 874-5882

Customer Service and Support

Toll Free NA: (800) 755-5505
Toll in NA: (425) 356-1799

Copyright © 2007 Intermec Technologies Corporation. All rights reserved. Intermec is a registered trademark of Intermec Technologies Corporation. All other trademarks are the property of their respective owners. Printed in the U.S.A. 611843-01A 07/07

In a continuing effort to improve our products, Intermec Technologies Corporation reserves the right to change specifications and features without prior notice.

